



## Driving Range Overview

Our design for the driving range has evolved significantly over the past few months as we have clarified our vision for this facility and worked with Brett Thomson (Course Design) and Adam Taylor (Architect) on potential solutions.

One of the first ideas to come out of discussions was to utilise the range building as part of the retention for the carpark that sits behind the new range. As most of you will be aware this land slopes away down towards Lucas Creek, therefore lends itself to a sunken range facility that you will see outlined in the current plans.

This idea gained more traction because it provided a discreet solution for the driving range for both neighbours and members arriving in the carpark. The views down towards Lucas Creek will be maintained and not obscured by a large structure, with the only new edition the Proshop sitting at the clubhouse end of the range providing some protection on the practice greens from the prevailing winds.

We also believe this hunkered down design will reduce the potential risk of balls leaving the designated areas and help reduce any wind and noise related issues from the facility.

## PERSPECTIVES



### Proshop Relocation

With the relocation of the carpark the plan is for members to access the course and Proshop at the western end of the main clubhouse building. With the Proshop now located at this end of the facility this should make the flow and connection between Check In, Warm Up and Practice areas work much better.

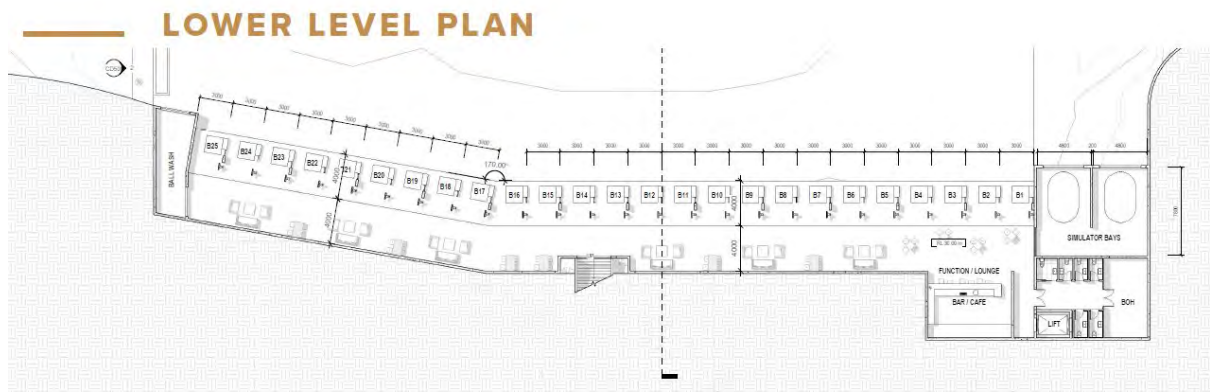
People will be able to check in, hit a few balls on the range and then out onto the extensive practice green area before heading to the 1<sup>st</sup> tee.

The area between Proshop and existing clubhouse is joined by a covered area that will provide protection from the rain and prevailing winds.

### Driving Range Facilities

Current plans for the range show around 25 covered bays on the lower level of the range. We are designing this facility with enough depth to accommodate a walkway to allow people to access with trundlers, and for each bay to have the space to accommodate either a bar leaner with 4-6 seats or lower level more comfortable seating.

All bays will have Range Tracer Technology with a number of options under consideration (Trackman, Toptracer, Inrange).



## Driving Range Technology

The ball tracking technology uses either Camera or Radar to track the golf balls being hit on the driving range. There are pros and cons to both systems. Camera technology (Toptracer) requires additional floodlighting for ranges looking to operate when it's dark and can have issues if the sun is setting and affects the cameras. Radar Technology (Trackman & Inrange) doesn't require extensive lighting.

Other considerations are how the different technology integrate with booking systems and ball dispensing technology, tracking speed and player usability.

Operational best practice for range facilities is to operate on a time-based booking of bays, rather than people getting a basket and hitting for an undefined period of time. This means that people can hit an unlimited number of balls during their timed booking and will vary dependant on the activity and purpose of the practice.

The technology benefits to the club golfer are significant. Members will be able to track each and every ball that they hit on the range (if they choose to do so), the technology can provide structured practice sessions and provide feedback on where they hit (or miss) certain clubs.

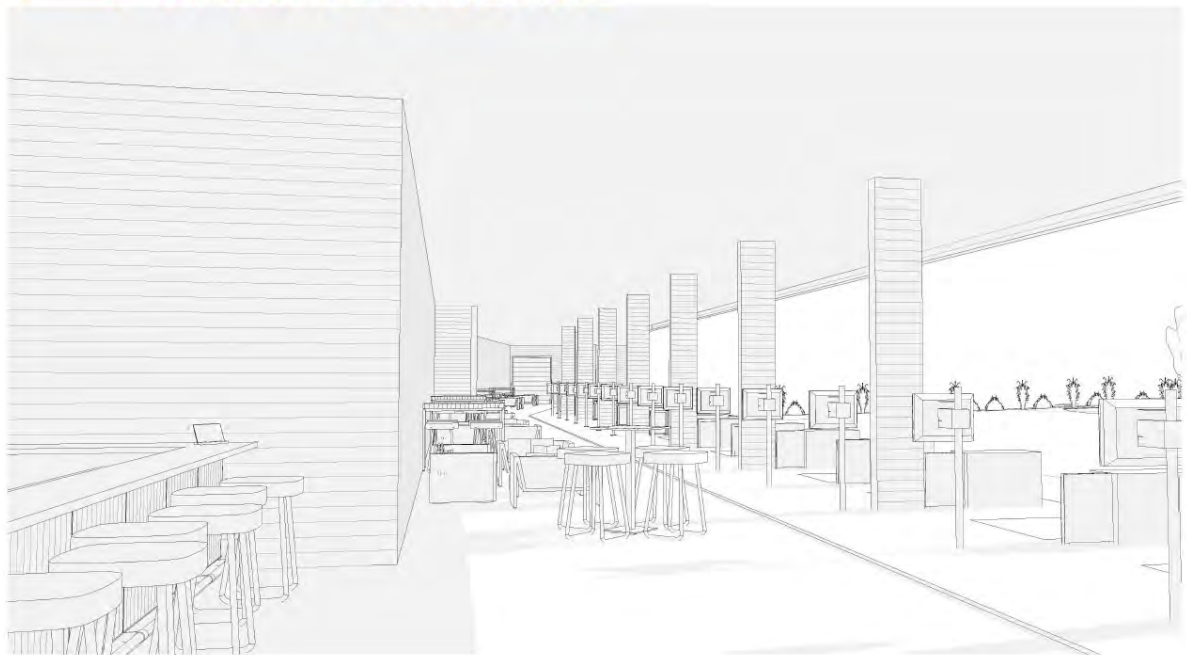
Each bay will have a digital screen that the member will be able to login to and will link to the members personal profile, this is where the

members can access the different practice modules, games or courses to play.

Balls will be dispensed for the duration of the booking by an 'In Bay Dispenser' that will pop balls out onto the range mat ready to be hit. When the booking ends the balls will stop dispensing.

Our Range bays will have heating and music creating an inviting atmosphere for members and visitors alike on a year-round basis.

### INTERNAL PERSPECTIVE



### Ball Collection and Distribution

We have incorporated the ball washing facilities at the far end of the range and have scoped a system where balls are dropped into a collection pit following collection by range cart, they are then washed before being put in a cart that will fill the in-range dispensers at the end of each day.

We are draining, irrigating and sand capping the range to prevent balls plugging and will use nets as required although we hope to mitigate much of the risk with earth and planting.

## Range Design and Facilities

The range has been designed with a small bar/cafe area at the eastern end of the facility with function lounge space, the plan is for this to also be a check in area in the evenings when the range is busy. We are currently investigating the possibility of having a similar space at the other end of the facility (without the bar).

There will be toilet facilities and teaching bays for our Professional Coaches. We have also incorporated golf cart storage into the lower level of this facility. Access will either be via a lift from the Proshop or down the main staircase from the upper level.

All bays will be heated and have music creating a vibrant cosy atmosphere for people to meet and socialise.

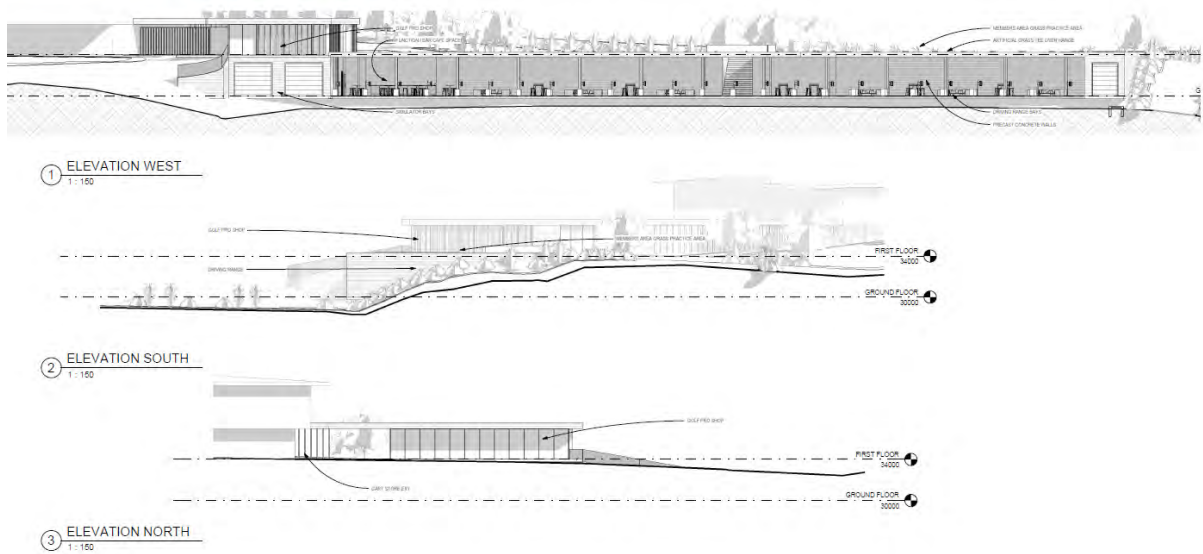
## F&B Service

We plan to service the bays with drinks provided from this bar area, these can either be ordered at the bar or via a QR Code ordering service for delivery directly to the bays.

Following extensive consultation with other range operations it was decided to prepare and serve food from one central kitchen at the club which would help us cater to two separate audiences utilising the same kitchen staff. We envisage food being offered in both the club's bar and the range facility, serviced from the main central kitchen.

We believe that increased turnover will make it sustainable to offer an increased member F&B offer that better meets the needs of all members for longer hours.

## ELEVATIONS



## Safety

We believe this hunkered down design will reduce the potential risk of balls leaving the designated areas of the range and help reduce any noise related issues from the facility.

Tracking technology means that range staff are alerted to any issues of balls leaving geofenced areas, giving the team oversight and control, booking systems will mean we know who is playing where and when. Targets will be aligned to ensure that people are aiming where we need them to.

Finally, we have the ability to use golf balls with a limited flight to ensure that people do not hit beyond the 275m length of the range. This distance reduction can then be factored into the calculations when tracking the balls being hit.